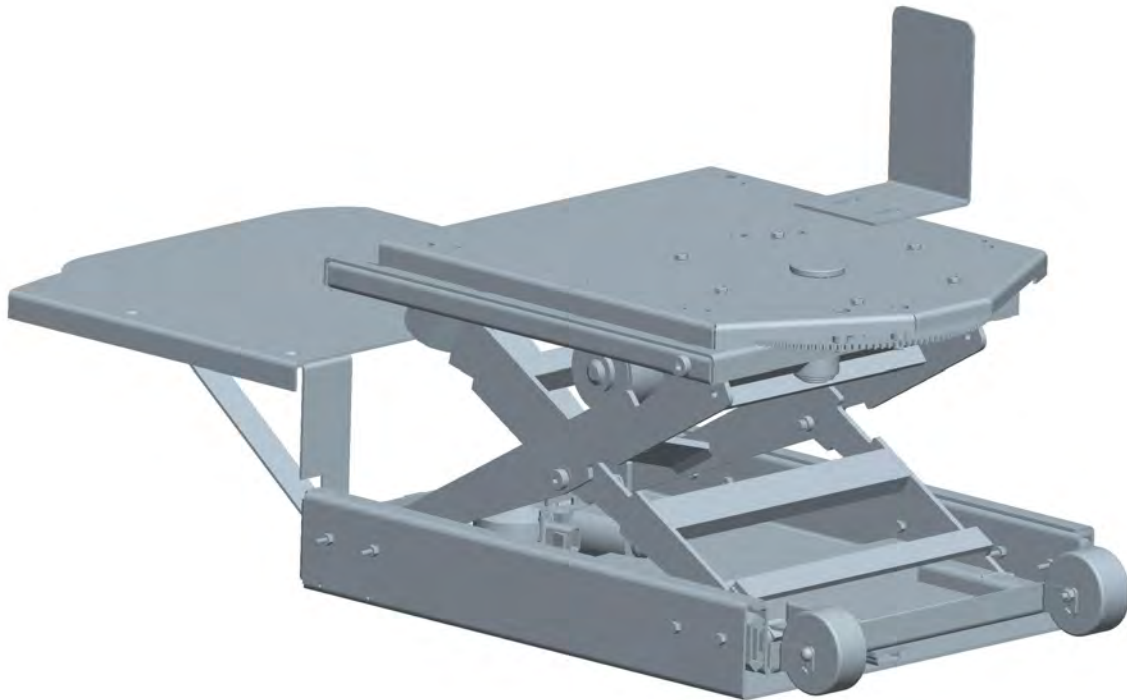




RollX
VANS

6WAY TRANSFER SEAT

SERVICE MANUAL



Main: (800) 956-6668
Local: (952) 890-7851
Fax: (952) 808-2775

Your Life. Your Ride.TM

6591 W. Hwy 13
Savage, MN 55378
www.rollxvans.com



6WAY TRANSFER SEAT

SERVICE MANUAL



Troubleshooting 2

Replacement Parts - Top View 4

Replacement Parts - Middle View 5

Replacement Parts - Bottom View..... 6

Replacement Parts List - 7001-06,07,08 7

Replacement Parts List - Past 6way Seats 8

7001-08 Wiring - Main Harness..... 9

7001-08 Wiring - Cable Harnesses 10

7001-08 Wiring - Schematics 11,12,13

7001-06, 7001-07 Wiring - Cable Harnesses 14

7001-06, 7001-07 Wiring - OEM Power Sliding Door Minivan 15

7001-06, 7001-07 Wiring - Rollx Vans Power Sliding Door Minivan..... 16

7001-06, 7001-07 Wiring - Fullsize Van 17

7001-04 Wiring - OEM Power Sliding Door Minivan..... 19

7001-04 Wiring - Rollx Vans Power Sliding Door Minivan..... 20

7001-04 Wiring - Fullsize Van..... 21

Pre 7001-02 (Switch Box) Wiring 22

Warranty 23



PAGE INTENTIONALLY LEFT BLANK.



Symptom	Possible Cause	Remedy
Seat base does NOT MOVE when any button on hand pendant is pressed.	Controller program failure.	Press the 6-way seat controller reset button located on the 6-way seat controller.
	Blown fuse for power to 6-way.	Check 6-way seat in-line fuse located under the hood near the battery. Replace if needed with a 40 amp blade fuse located in the glove box.
	Blown fuse for 6-way seat controller.	Check 6-way seat controller fuse located in fuse block behind the glove box in OTC minivans or the in-line fuse located under hood near the battery. Replace with 1 amp blade fuse located in the glove box.
	Hand pendant wire is unplugged.	Plug wire back into coupler plug on seat top plate or back into 6-way seat controller.
	Main harness is unplugged.	Plug red plug back into 6-way seat controller.
	Controller logic harness is unplugged.	Plug small black plug back into 6-way seat controller.
	Bad ground.	Check ground wire at fuse panel behind the glove box or at the battery.
	Bad wire harness.	Check continuity of all wire harnesses. Repair or replace as needed.
One function of the 6-way seat doesn't work (I.e. seat will not swivel but will raise and slide)	Controller failure.	Replace 6-way seat controller.
	Bad connection.	Check plugs going into 6-way controller board and respective motors.
	Bad motor.	Check for power at motor or connect auxillary power to motor directly.*
	Hand pendant malfunction.	Replace hand pendant
Squeeky seat	Controller failure.	Replace 6-way seat controller.
	Metal rubbing.	Use greese on scissors and slides and rotate gear.

* If seat base ever fails in the down position, the wire harness for the up/down motor has connectors that can easily be seperated and hooked-up to an auxillary power source in order to raise the seat (refer to #85152-125ASM on a wiring diagram for harness detail).

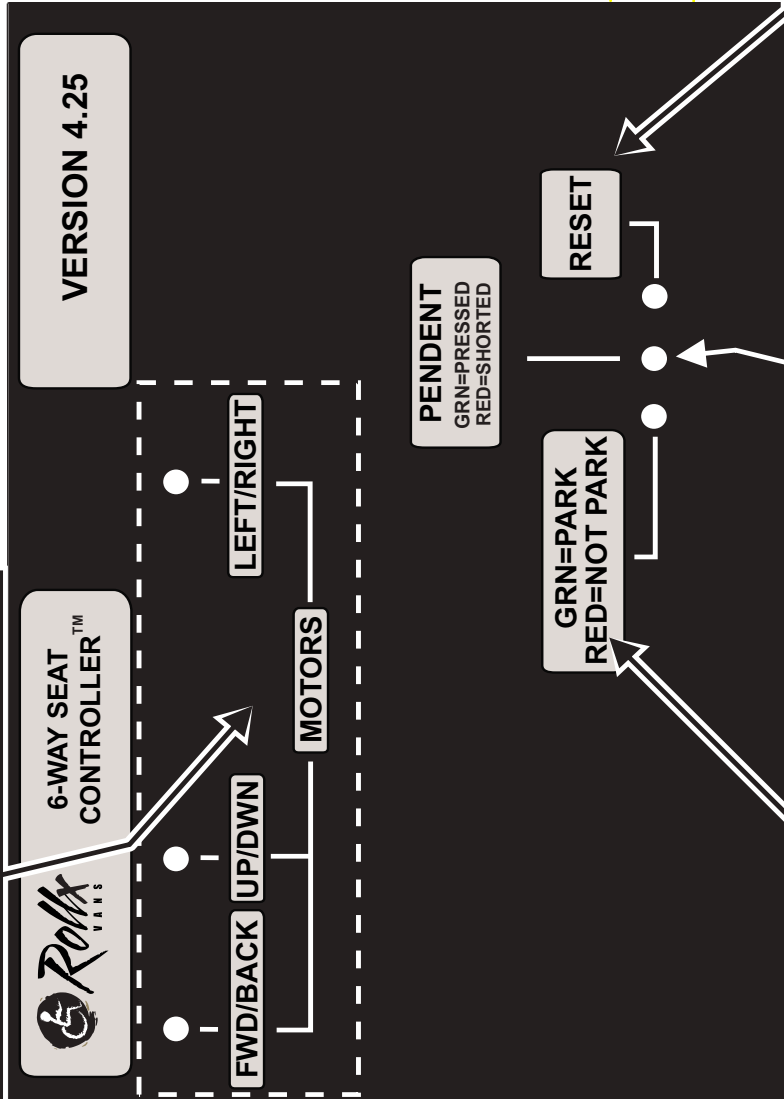
Replacement Parts and Wiring Diagram sections are also provided to aid in troubleshooting.

Motors LEDs

- 12v Output to specific motor (from 40 amp fuse near vehicle battery)
- Green = Fwd, Up, Right
- Red = Back, Dwn, Left
- Monitored after relays
- If LED lights, control is sending 12v to motor

Other Tips

- If control has no power, check 1 amp fuse in Rollix Vans fuse panel near glove box. This is the control's power source.
- Refer to owners manual and device decal for motor override instructions for manually moving the device.



Vehicle Neutral Safety Status

- Only active when pendant button is pressed
- Must be Green (Park) for seat to operate
- Neutral Safety connection is from Rollix Vans fuse panel near glove box

7001-08 6way Seat Pendant Switch Status

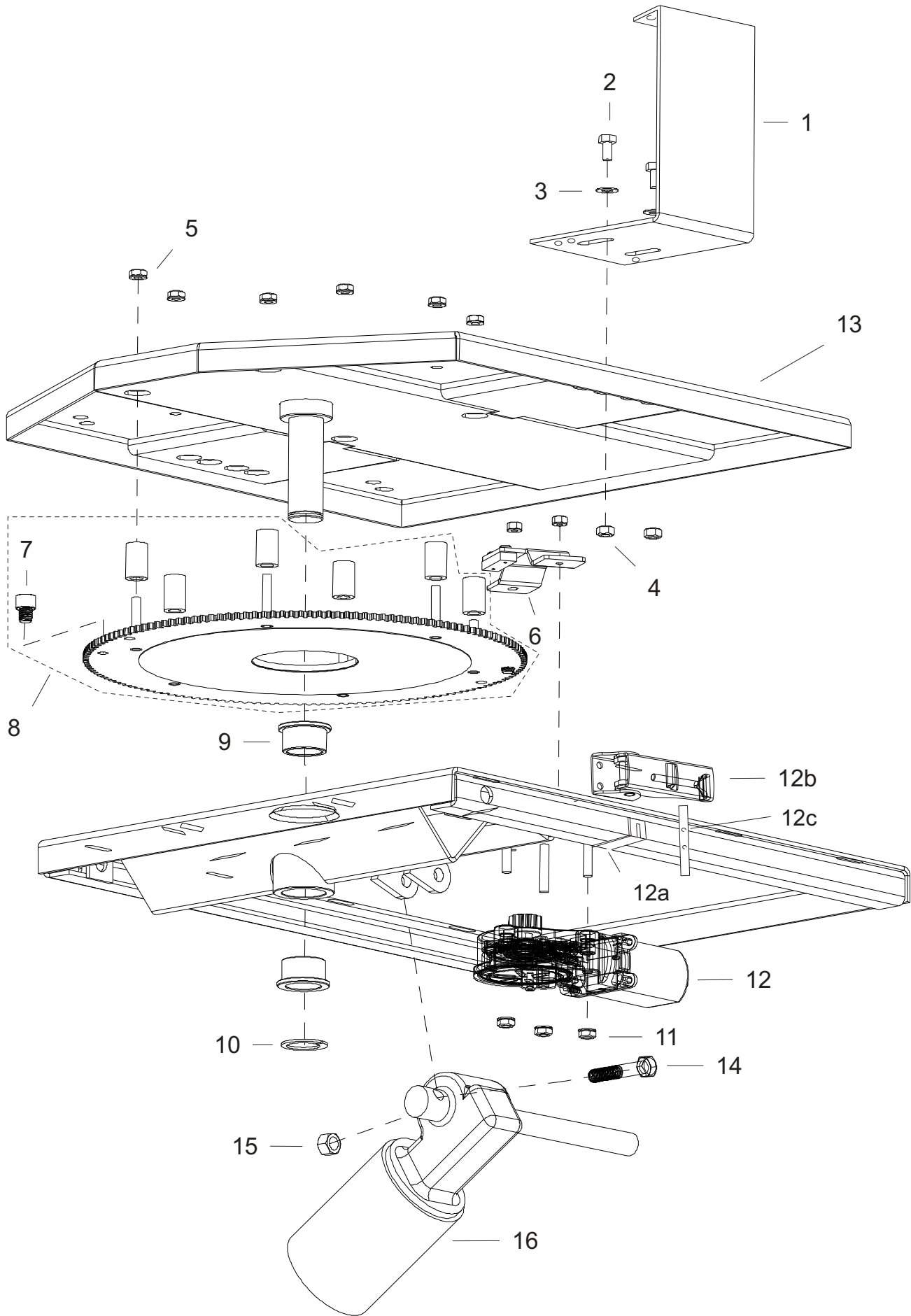
- Activates when any button on hand pendant is pressed.
- If all 6 buttons on hand pendant activate green LED, the pendant and connections are likely good.
- If RED LED is lit up the pendant switch/wire is shorted

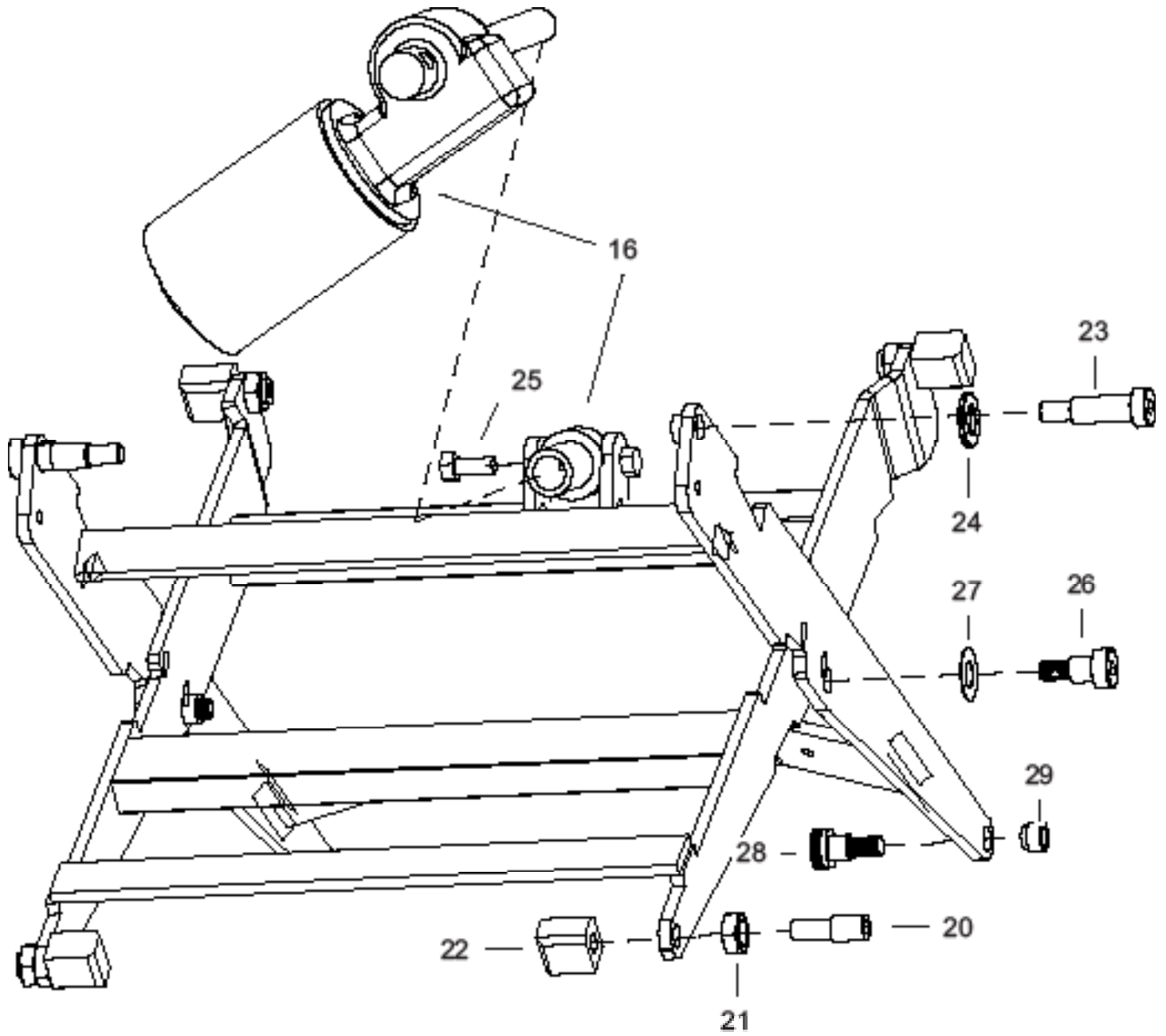
7001-06 to -07 6way Seat Pendant Switch Status

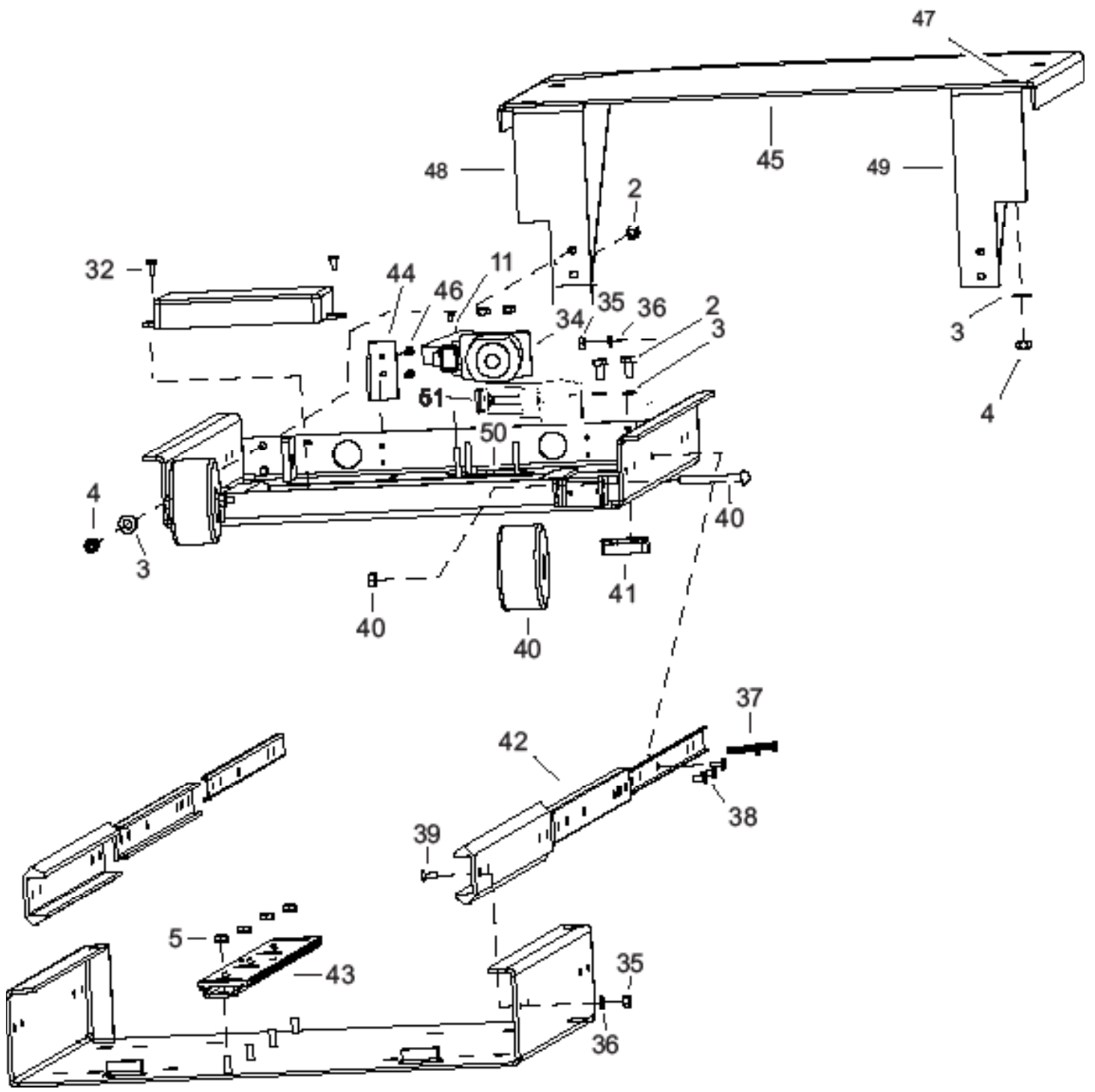
- Activates when any button on hand pendant is pressed
- If all 6 buttons on hand pendant activate the LED, the pendant and connections are likely good

Reset Switch Input

- Activates when Control is getting reset signal from Reset Button









REPLACEMENT PARTS LIST - 7001-08 TO -06

Item	Qty.	Description	7001-08	7001-07, 06
1	1	6WAY,PENDANT BRACKET	SB7000-12	SB7000-12
2	10	1/4-20X1 HEX BOLT	15005	SAME
3	14	1/4 FLAT WASHER	33004	SAME
4	10	1/4-20 NYLOC NUT	37018	SAME
5	10	1/4-20 KEPS NUT	37410	SAME
6	1	6WAY,GEAR GUIDE	SB7004-008L	SB7004-008L
7	2	6WAY,STOP BOLTS	381638SHCH	381638SHCH
8	1	6WAY,SWIVEL GEAR ASM	SB7006-001ASM	SB7005-001ASM
9	2	FLANGED BEARING	6338K436	6338K436
10	1	SNAP RING	98410A133	98410A133
11	8	#10-32 KEPS NUT	37408	SAME
12	1	MOTOR,6WAY SWIVEL	214-1003	214-1003
12a	1	ROTATE MOTOR PLATE	SB7002-004GWELD	NA
12b	1	LATCH SOUTHCO VANTAGE	91-562-07	NA
12c	1	VELCRO AND RIVOTS	94905K629 SD42BS2200	NA
13	1	6WAY,TOP PLATE ASM	SB7005-009	SB7005-009
14	1	HEX SCREW 3/8-16 X 2	91257A632	91257A632
15	1	3/8 NYLOC NUT	37024	SAME
16	1	ACTUATOR 6WAY PENDANT	85152-125	85152-125
20	4	SLIDER PIN	SB7000-007	SB7000-007
21	4	1/2 JAM NUT	36210	SAME
22	4	SLIDER BLOCK	SB7000-006	SB7000-006
23	2	LONG SHOULDER SCREW 6WAY	SS500-1025	SS500-1025
24	2	1/2 FLAT WASHER	33012	SAME
25	2	5/16-18X1-1/4 HEX BOLT	15057	SAME
26	2	SHOULDER SCREW 1/2 X 1/2	SS500-500	SS500-500
27	2	1/2 THIN WASHER	SHOP SUPPLY	SAME
28	2	SHOULDER SCREW 1/2 X3.75	SS500-375	SS500-375
29	6	6WAY, 3/8-16 PEM PRESS NUT	S-0616-2	S-0616-2
32	2	#8X3/4 SCREW SHEET METAL	162729	SAME
33	1	NOT USED		
34	1	MOTOR FOR 6WAY SEAT	CBMA0011	CBMA0011
35	18	#10-32 NUT	36030	SAME
36	18	#10 WASHER	33002	SAME
37	4	#10-32X1 PAN HEAD SCREW	1129073	SAME
38	6	#10-32X1/2 PAN HEAD SCREW	29049	SAME
39	8	#10-32X1 FLAT HEAD SCREW	29073	SAME
40	2	WHEEL W/AXLE & NUT	HR25F2	HR25F2
41	2	6WAY, STOP BLOCK	SB7000-004G	SB7000-004G
42	2	SLIDE TRACKS 6WAY SEATS	C3600-22D	C3600-22D
43	1	GEAR RACK WELDMENT	SB7000-003	SB7000-003
44	1	6WAY,SNAKE BRKT	SB7000-013	SB7000-013
45	1	6WAY,FOOTREST TOP (DR / PS)	SB7005-018/-019	SB7005-018/-019
46	2	#6X1 SCREW SHEET METAL	153533	SAME
47	4	1/4-20 PEM STUD PRESSED IN	N / A	N / A
48	1	6WAY,FOOTREST LEFT BRKT	SB7005-16	SB7005-16
49	1	6WAY,FOOTREST RIGHT BRKT	SB7005-17	SB7005-17
50	1	BACK / FORWARD MOTOR PLATE	SB7002-004F	NA

REPLACEMENT PARTS LIST - 6WAY SEATS 7001-01 TO -04

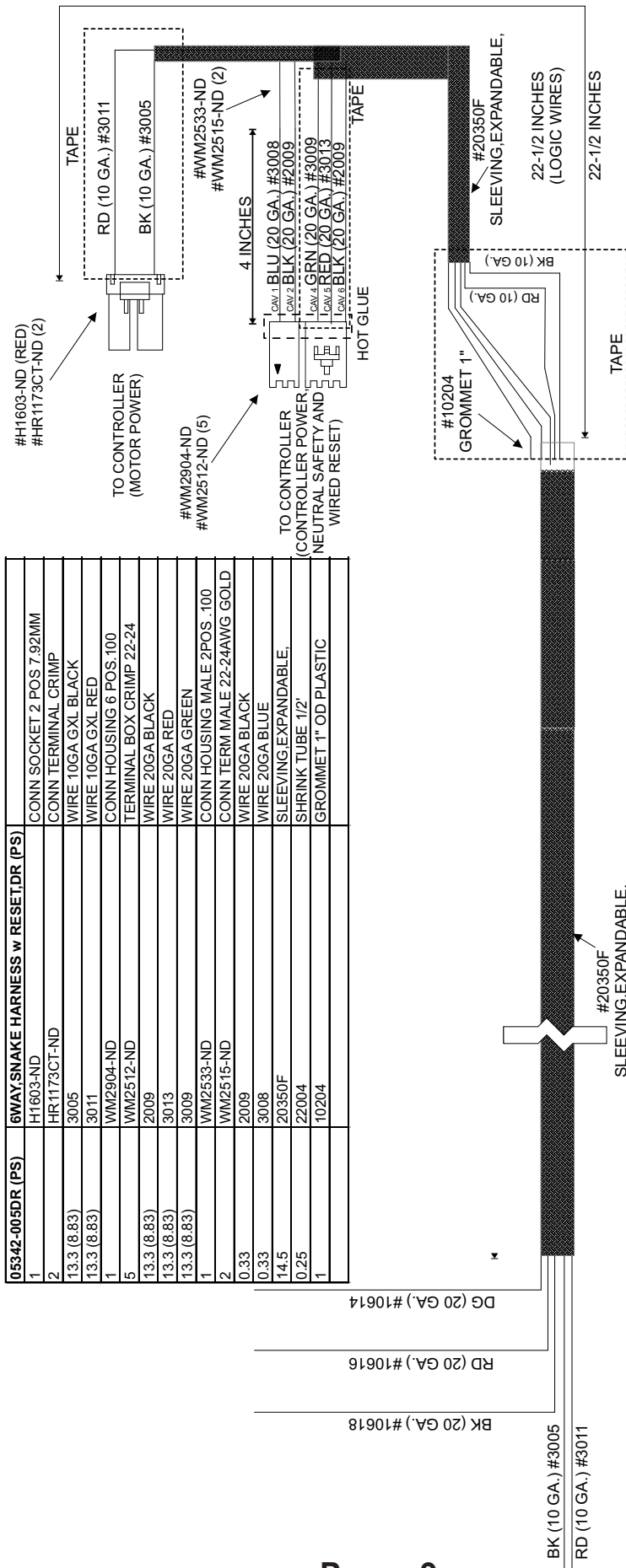
Item	Description	7001-04	7001-03	7001-02	7001	7000 (Low Profile)	7000 (High Profile)
		180 Degree Swivel w/ Footrest	HD Pendant	Pendant	Low Profile w/ #CBMA0011 Motors	Low Profile w/ A&M Swivel Motor	High Profile (7-3/4" base) w/ #REP024 Motors
1	6WAY, PENDANT BRACKET	SB7000-12	SB7000-12	SB7000-12	SB7000-11	SB7000-11	SB7000-11
2	1/4-20X1 HEX BOLT	150005	SAME	SAME	SAME	SAME	SAME
3	1/4 FLAT WASHER	33004	SAME	SAME	SAME	SAME	SAME
4	1/4-20 NYLOC NUT	37018	SAME	SAME	SAME	SAME	SAME
5	1/4-20 KEPS NUT	37410	SAME	SAME	SAME	SAME	SAME
6	6WAY, GEAR GUIDE	SB7004-008L	SB7004-008L	N/A	N/A	N/A	N/A
7	6WAY, STOP BOLTS	381638SHCH	381638SHCH	381638SHCH	381638SHCH	N/A	N/A
8	6WAY, SWIVEL GEAR ASM	SB7004-001asm	SB7002-001	SB7002-001	SB7002-001	SB7000-001ASM	SB7000-101A
9	FLANGED BEARING	6338K436	6338K436	6338K436	6338K436	6338K436	6338K436
10	SNAP RING	98410A133	98410A133	98410A133	98410A133	98410A133	98410A133
11	#10-32 KEPS NUT	37408	SAME	SAME	SAME	N/A	N/A
12	MOTOR, 6WAY SWIVEL	214-1003	214-1003	CBMA0011	CBMA0011	210-1011+412-1032	SB7000SWIVEL-310-1059
13	6WAY, TOP PLATE ASM	SB7005-009	SB7005-009	SB7005-009	SB7005-009	SB7005-009	N/A
14	HEX SCREW 3/8-16 X 2	91257A632	91257A632	91257A632	91257A632	91257A632	91257A632
15	3/8 NYLOC NUT	37024	SAME	SAME	SAME	SAME	SAME
16	MOTOR, 6WAY, UP DN ASM	85152-125	85152-125ASM	85152-125ASM	85152-125ASM	85152-125ASM	85152-125ASM
20	SLIDER PIN	SB7000-007	SB7000-007	SB7000-007	SB7000-007	SB7000-007	SB7000-007
21	1/2 JAM NUT	36210	SAME	SAME	SAME	SAME	SAME
22	SLIDER BLOCK	SB7000-006	SB7000-006	SB7000-006	SB7000-006	SB7000-006	SB7000-006
23	LONG SHOULDER SCREW 6WAY	SS500-1025	SS500-1025	SS500-1025	SS500-1025	N/A	N/A
24	1/2 FLAT WASHER	33012	SAME	SAME	SAME	SAME	SAME
25	5/16-18X1-1/4 HEX BOLT	15057	SAME	SAME	SAME	SAME	SAME
26	SHOULDER SCREW 1/2 X 1/2	SS500-500	SS500-500	SS500-500	SS500-500	N/A	N/A
27	1/2 THIN WASHER	SHOP SUPPLY	SAME	SAME	SAME	N/A	N/A
28	SHOULDER SCREW 1/2 X3.75	SS500-375	SS500-375	SS500-375	SS500-375	N/A	N/A
29	6WAY, 3/8-16 PEM PRESS NUT	S-0616-2	S-0616-2	S-0616-2	S-0616-2	N/A	N/A
32	#8X3/4 SCREW SHEET METAL	162729	SAME	SAME	SAME	N/A	N/A
33	6-WAY SEAT CONTROLLERS	5334-001	5334-001	5334-001	N/A	N/A	N/A
34	MOTOR, 6WAY FW BK	CBMA0011	CBMA0011	CBMA0011	CBMA0011	CBMA0011	SB7000PVD-BK-310-1059
35	#10-32 NUT	36030	SAME	SAME	SAME	SAME	SAME
36	#10 WASHER	33002	SAME	SAME	SAME	SAME	SAME
37	#10-32X1 PAN HEAD SCREW	1129073	SAME	SAME	SAME	SAME	SAME
38	#10-32X1/2 PAN HEAD SCREW	29049	SAME	SAME	SAME	SAME	SAME
39	#10-32X1 FLAT HEAD SCREW	29073	SAME	SAME	SAME	SAME	SAME
40	WHEEL W/AXLE & NUT	HR25F2	HR25F2	HR25F2	HR25F2	N/A	N/A
41	6WAY, STOP BLOCK	SB7000-004G	SB7000-004G	SB7000-004G	SB7000-004G	SB7000-004G	N/A
42	SLIDE TRACKS 6WAY SEATS	C3600-22D	C3600-22D	C3600-22D	C3600-22D	C3600-22D	C3600-22D
43	GEAR RACK WELDMENT	SB7000-003	SB7000-003	SB7000-003	SB7000-003	SB7000-003	N/A
44	6WAY, SNAKE BRKT	SB7000-013	SB7000-013	SB7000-013	N/A	N/A	N/A
45	6WAY, FOOTREST TOP (DR / PS)	SB7005-018-/019	N/A	N/A	N/A	N/A	N/A
46	#6X1 SCREW SHEET METAL	153533	N/A	N/A	N/A	N/A	N/A
47	1/4-20X1/2 FLATHHEAD SCREW	N/A	N/A	N/A	N/A	N/A	N/A
48	6WAY, FOOTREST LEFT BRKT	SB7005-016	N/A	N/A	N/A	N/A	N/A
49	6WAY, FOOTREST RIGHT BRKT	SB7005-17	N/A	N/A	N/A	N/A	N/A

4 are just for reference and may appear different.



6WAY SEAT MAIN WIRE HARNESS (NO SNAKE) #05342-006 #7001-06,07,08 TRANSFER SEATS (NO OEM SEAT WIRES)

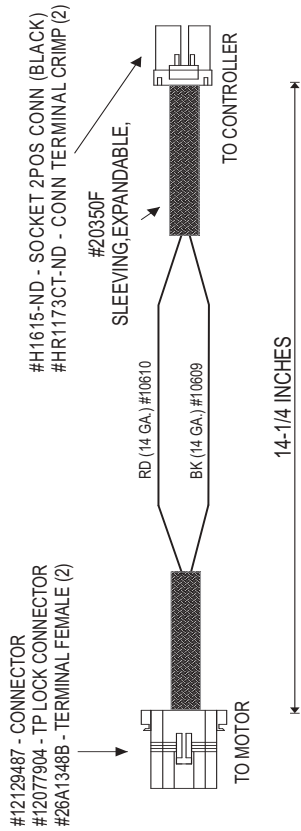
Q5342-005DR (PS)	Q5342-005DR (PS)	6WAY,SNAKE HARNESS w RESET,DR (PS)
1	H1603-ND	CONN SOCKET 2 POS 7.92MM
2	HR1173CT-ND	CONN TERMINAL CRIMP
13.3 (8.83)	3005	WIRE 10GA GXL BLACK
13.3 (8.83)	3011	WIRE 10GA GXL RED
1	WM2904-ND	CONN HOUSING 6 POS.100
5	WM2512-ND	TERMINAL BOX CRIMP 22-24
13.3 (8.83)	2009	WIRE 20GA BLACK
13.3 (8.83)	3013	WIRE 20GA RED
13.3 (8.83)	3009	WIRE 20GA GREEN
1	WM2533-ND	CONN HOUSING MALE 2POS .100
2	WM2515-ND	CONN TERM MALE 22-24AWG GOLD
0.33	2009	WIRE 20GA BLACK
0.33	3008	WIRE 20GA BLUE
14.5	20350F	SLEEVING,EXPANDABLE,
0.25	22004	SHRINK TUBE 1/2"
1	10204	GROMMET 1" OD PLASTIC



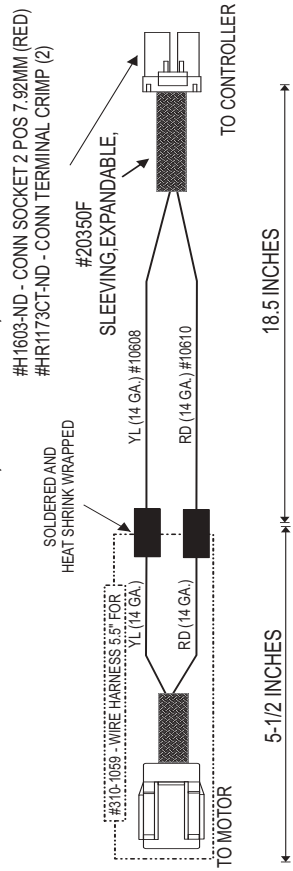


#7001-08 (ALL 6WAY SEATS WITH HAND PENDANT)
CABLE ASSEMBLIES

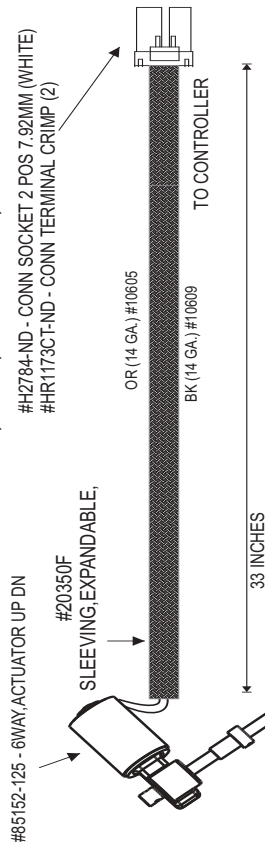
#05342-001 - 6WAY,MTR CABLE,FW BK



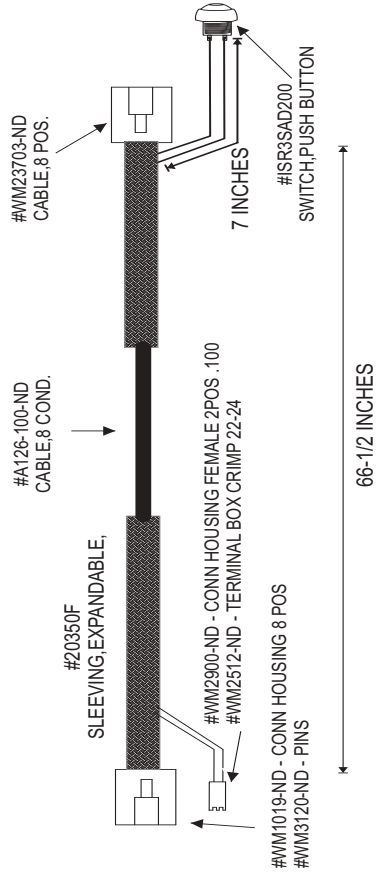
#05342-002 - 6WAY,MTR CABLE,SWIVEL



#85152-125-02ASM - 6WAY,ACTUATOR UP DN ASM
 #05342-003A - CABLE,6WAY,UP DN MTR, V1

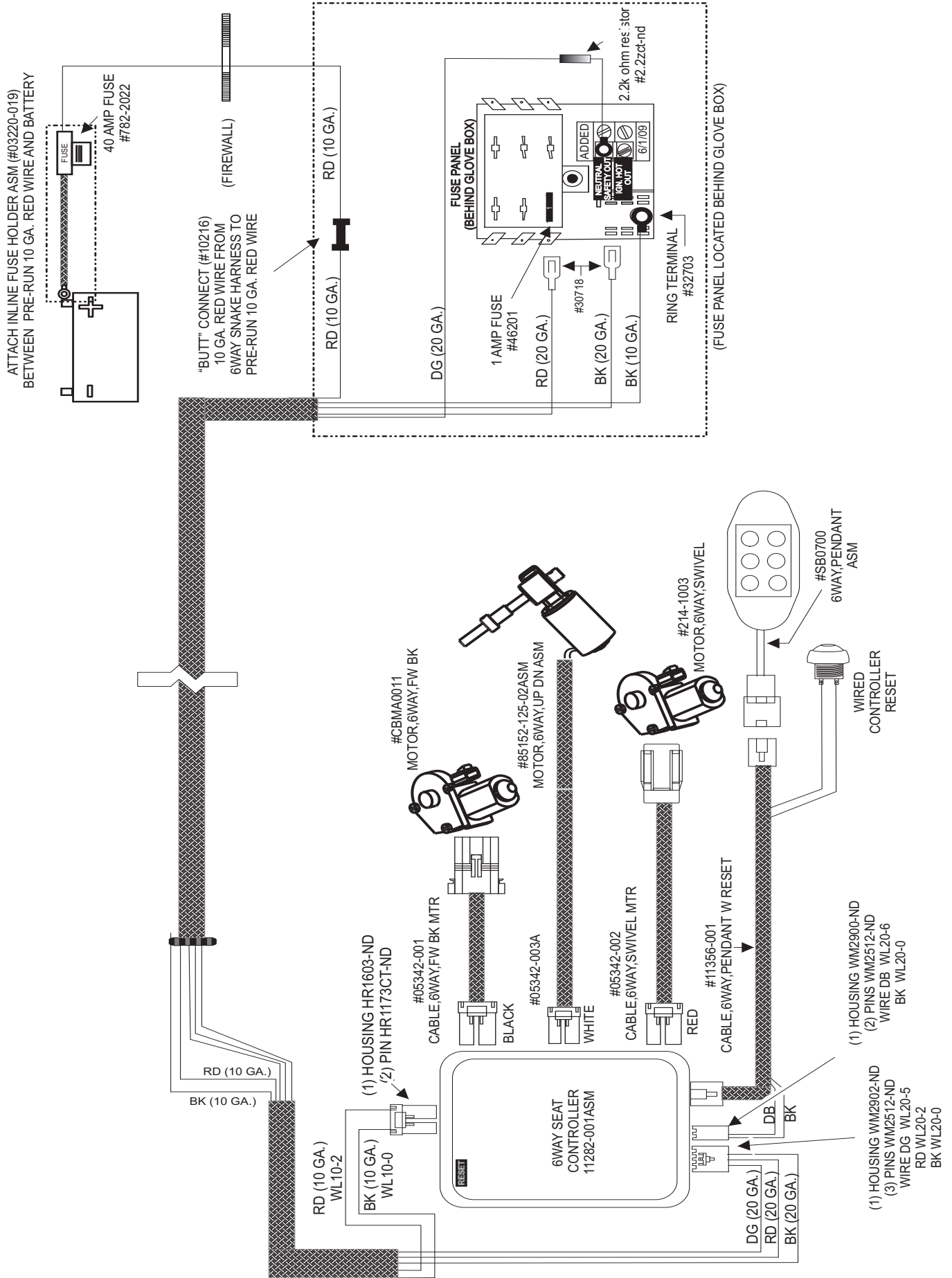


#11356-001 - EXTENSION CABLE,6WAY, PENDANT



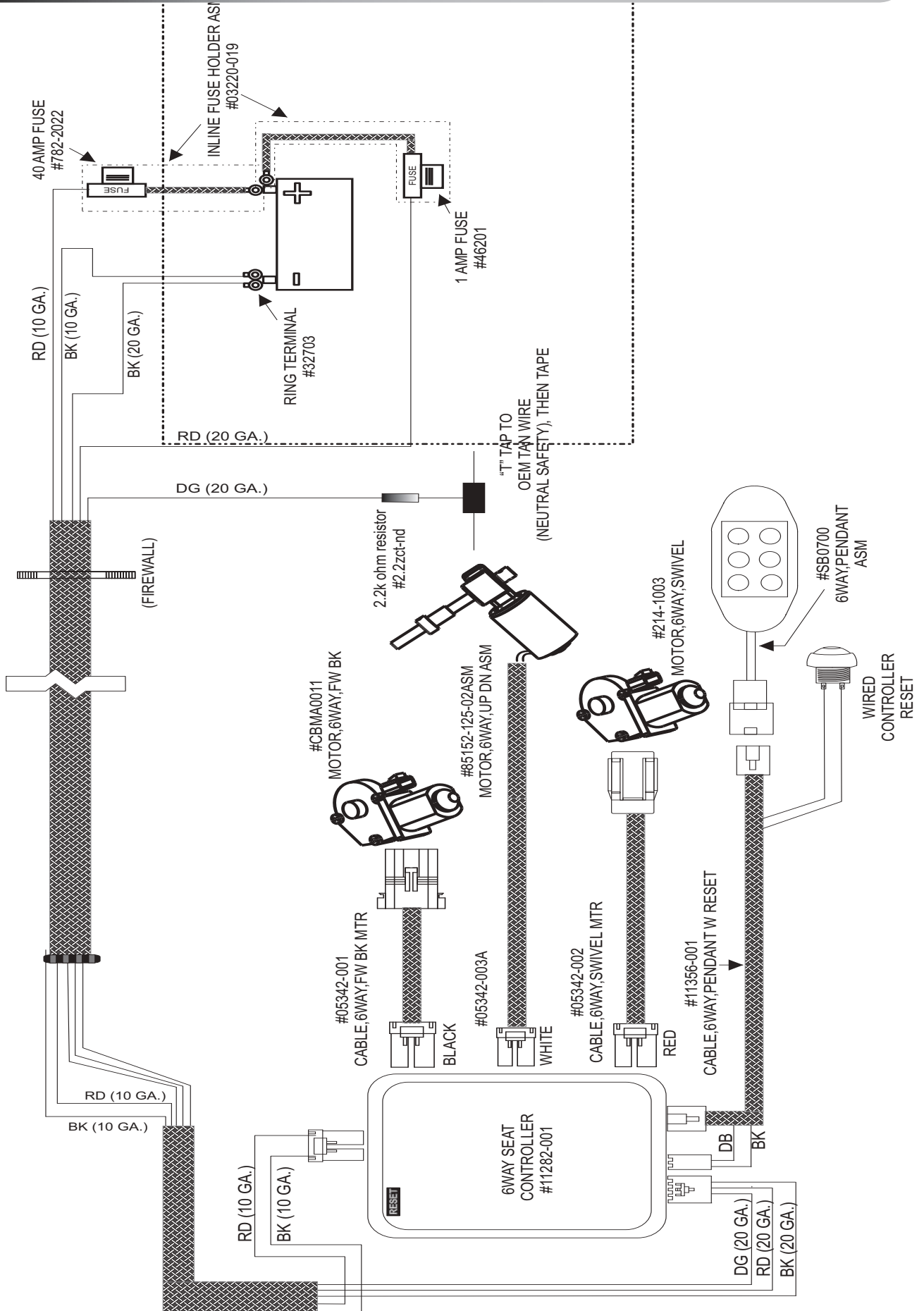


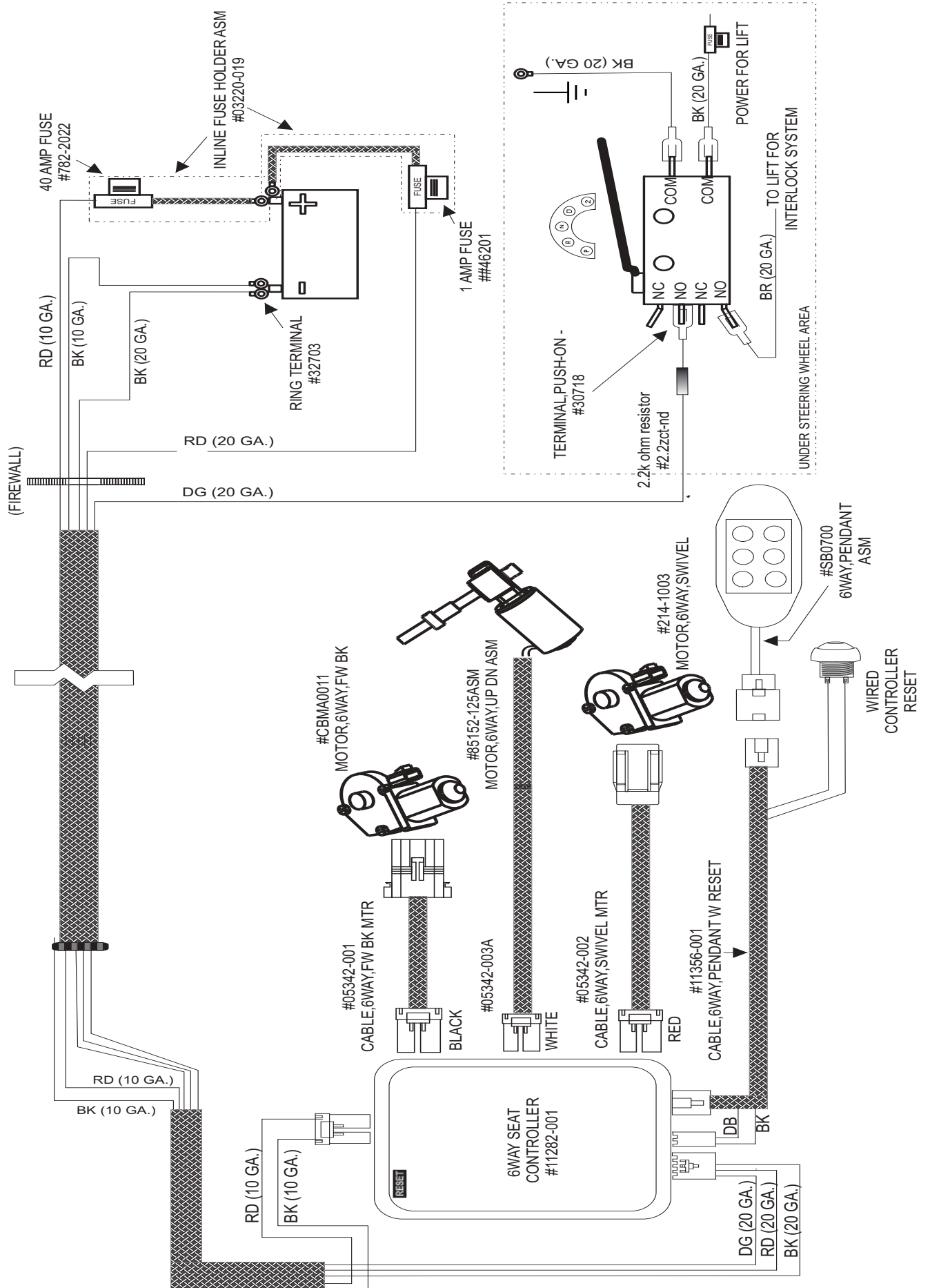
7001-08 WIRING - OEM POWER SLIDING DOOR MINIVAN





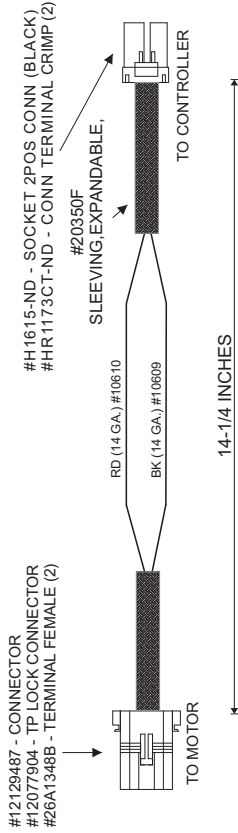
7001-08 WIRING - ROLLX VANS POWER SLIDING DOOR MINIVAN



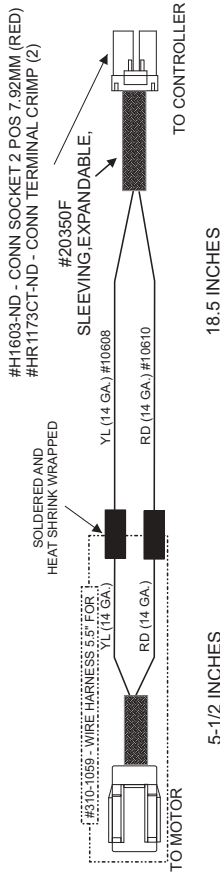


#7001-02 THROUGH #7001-07 (ALL 6WAY SEATS WITH HAND PENDANT)
CABLE ASSEMBLIES

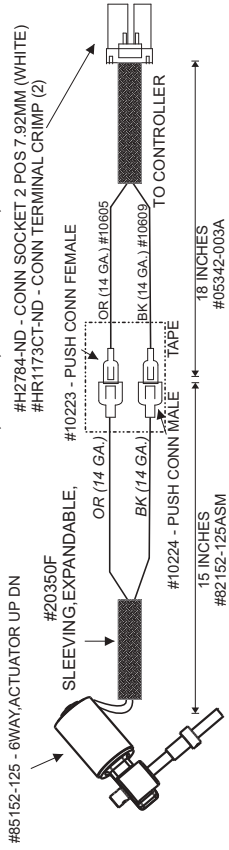
#05342-001 - 6WAY,MTR CABLE,FW BK



#05342-002 - 6WAY,MTR CABLE,SWIVEL

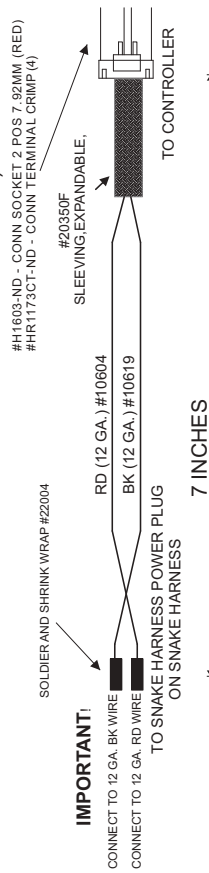


#85152-125ASM - 6WAY,ACTUATOR UP DN ASM
#05342-003A - CABLE,6WAY,UP DN MTR, V1



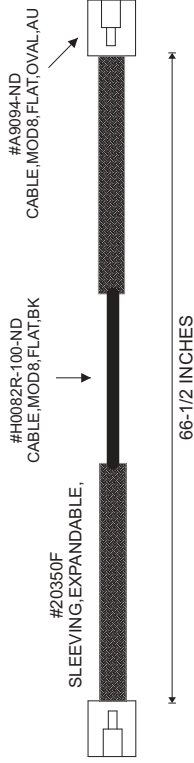
#07253-001 - CABLE,6WAY,RETRO EXT

(Extends the power cable that runs through snake harness for 7001-05 Seat to reach Control Board for 7001-04 Seat. ONLY FOR #R0034 RETRO KIT)

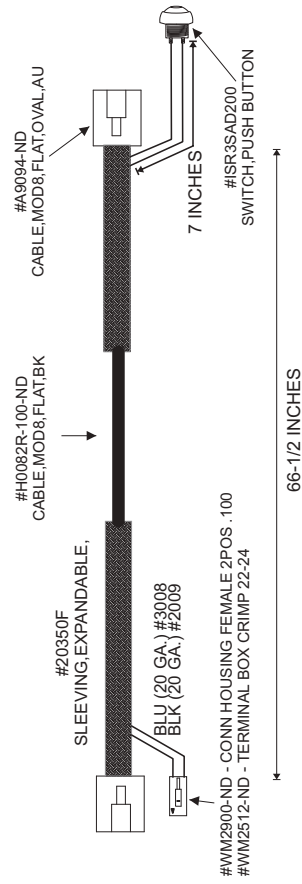


SCALE:	NONE	ROLLX VANS, INC
DRAWING #:	05342-005	6891 WEST HIGHWAY 13
REVISION #:	V-2.00	SAVAGE, MN 55378
DRAWN/CHECKED BY:	WRW	952.890.7851
REVISION HISTORY:	INITIAL RELEASE: V-1.00 12/08/2005 UPDATED: V-2.00 7/6/2008	

#07150-001 - CABLE,6WAY,PENDANT

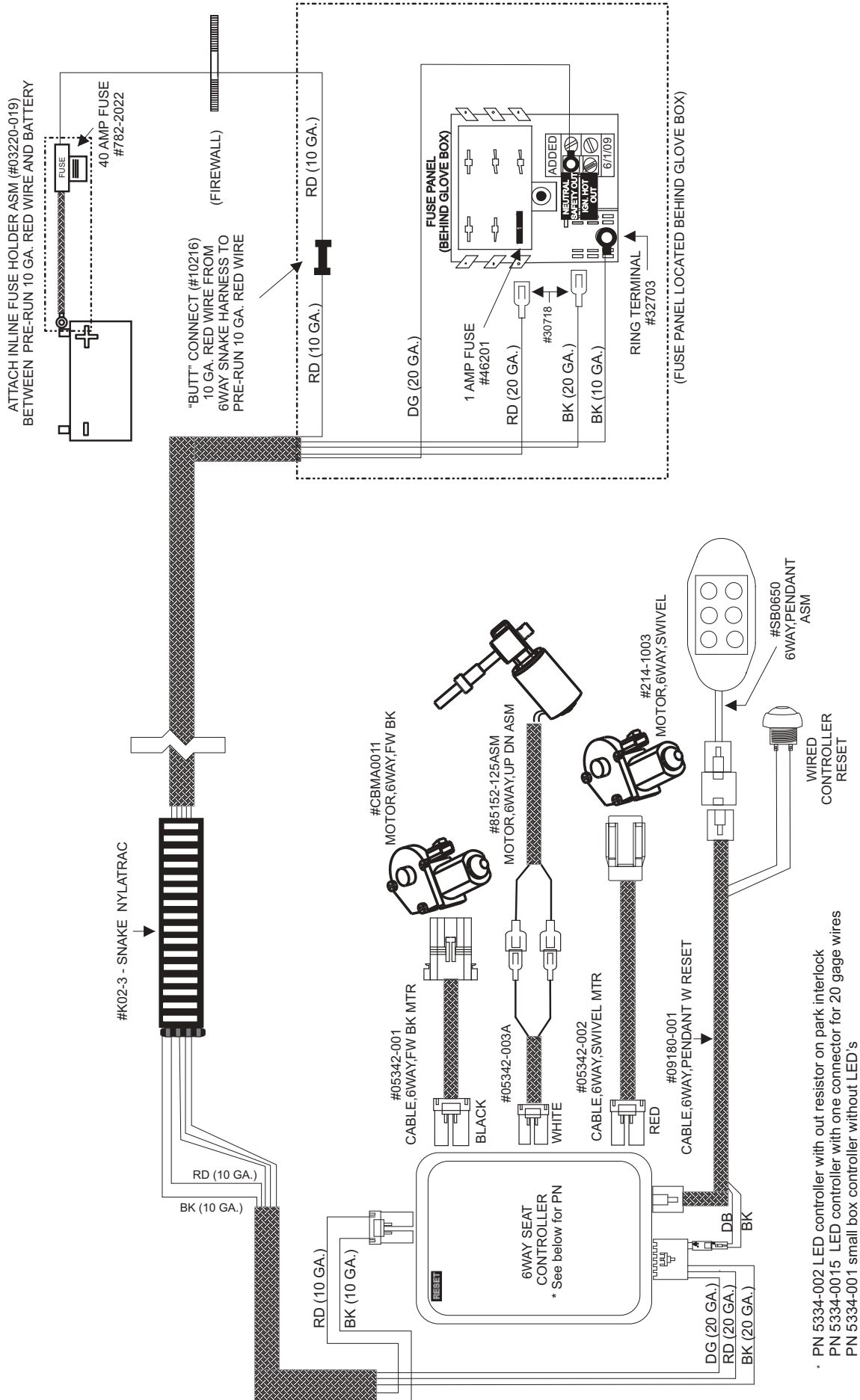


#09180-001 - CABLE,6WAY,PENDANT W RESET





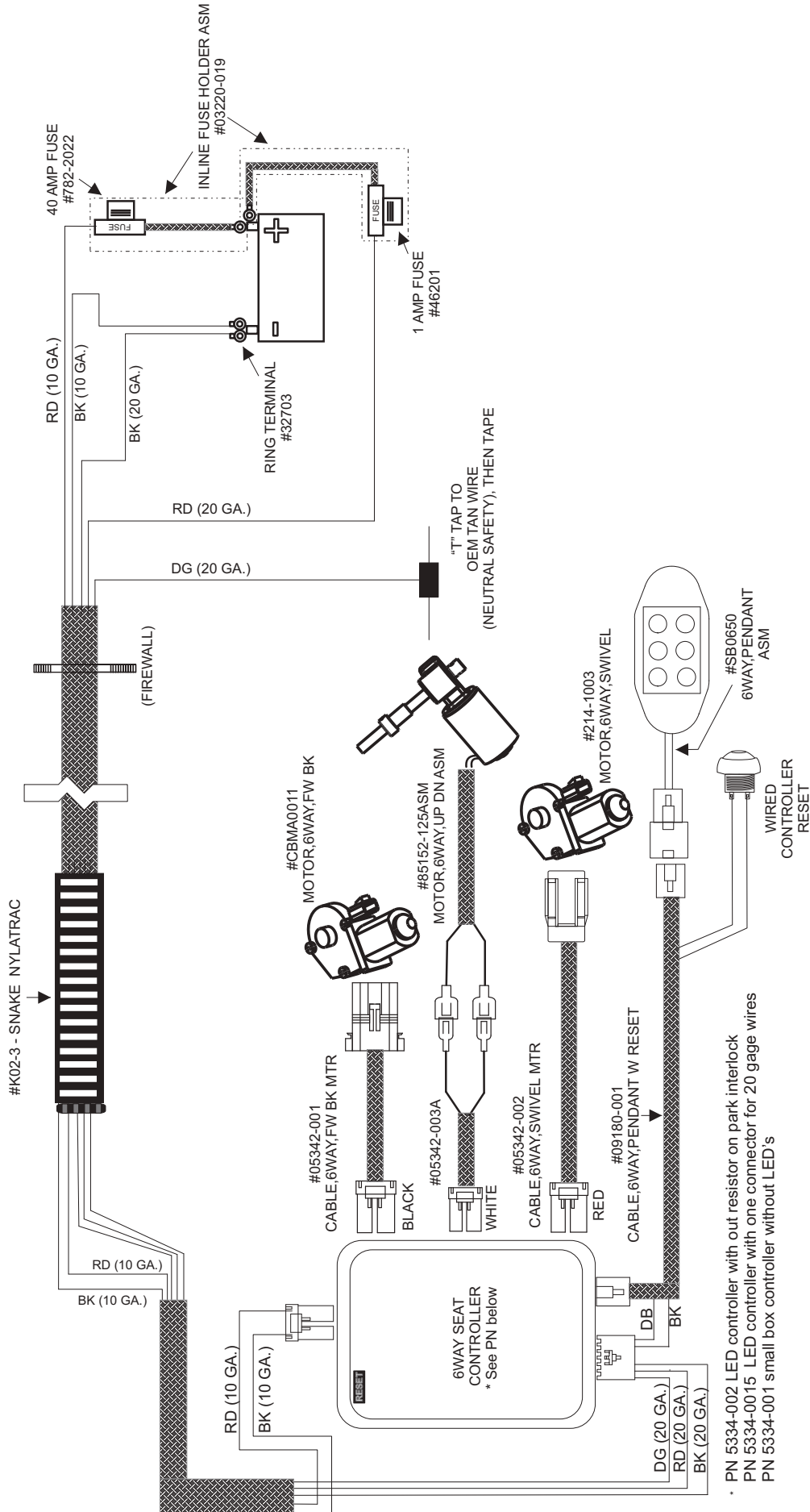
7001-06 TO -07 WIRING - OEM POWER SLIDING DOOR MINIVAN



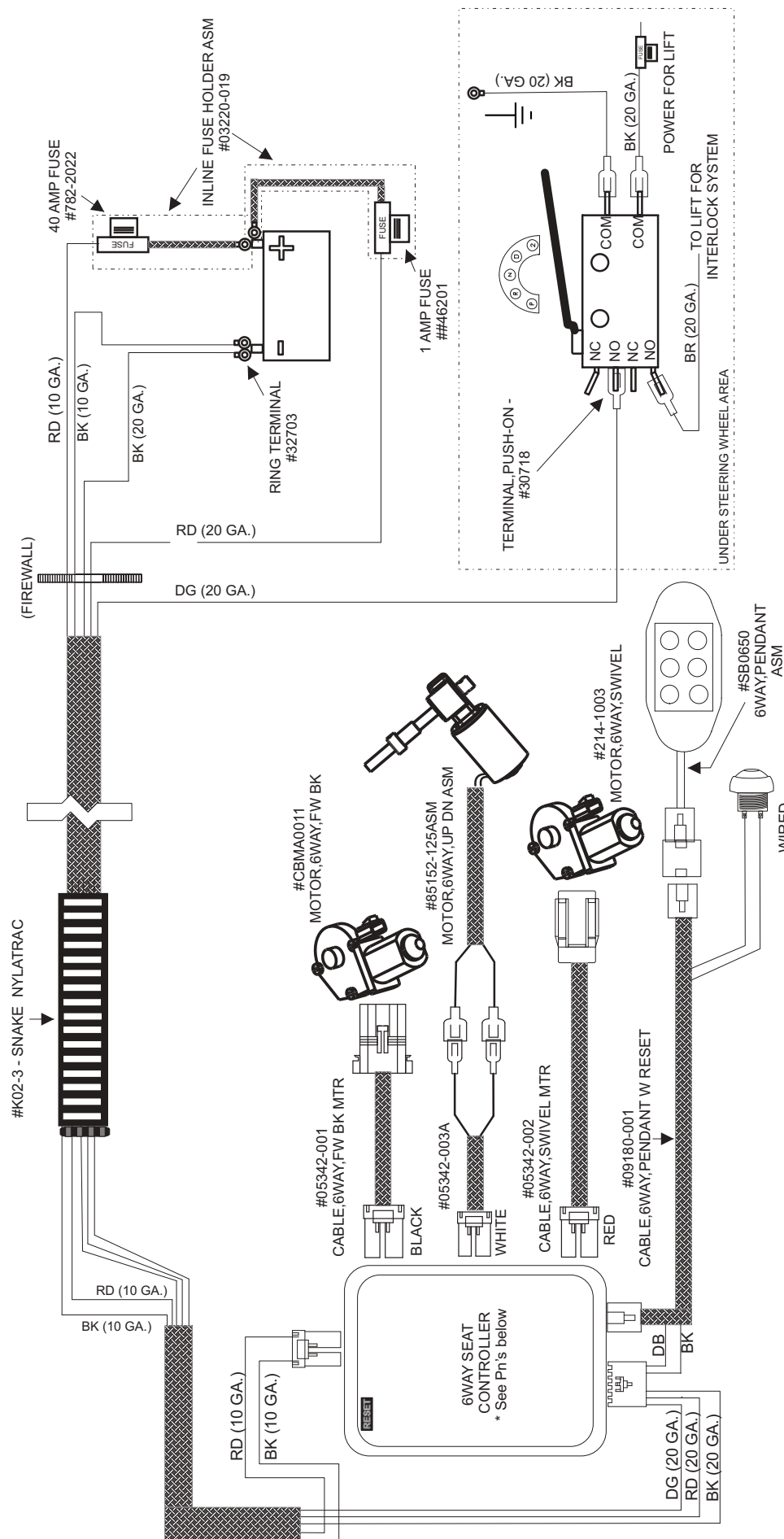
- PN 5334-002 LED controller with out resistor on park interlock
- PN 5334-0015 LED controller with one connector for 20 gage wires
- PN 5334-001 small box controller without LED's



7001-06 TO -07 WIRING - MOTOR BAR SLIDING DOOR MINIVAN



- PN 5334-002 LED controller with out resistor on park interlock
- PN 5334-0015 LED controller with one connector for 20 gage wires
- PN 5334-001 small box controller without LED's

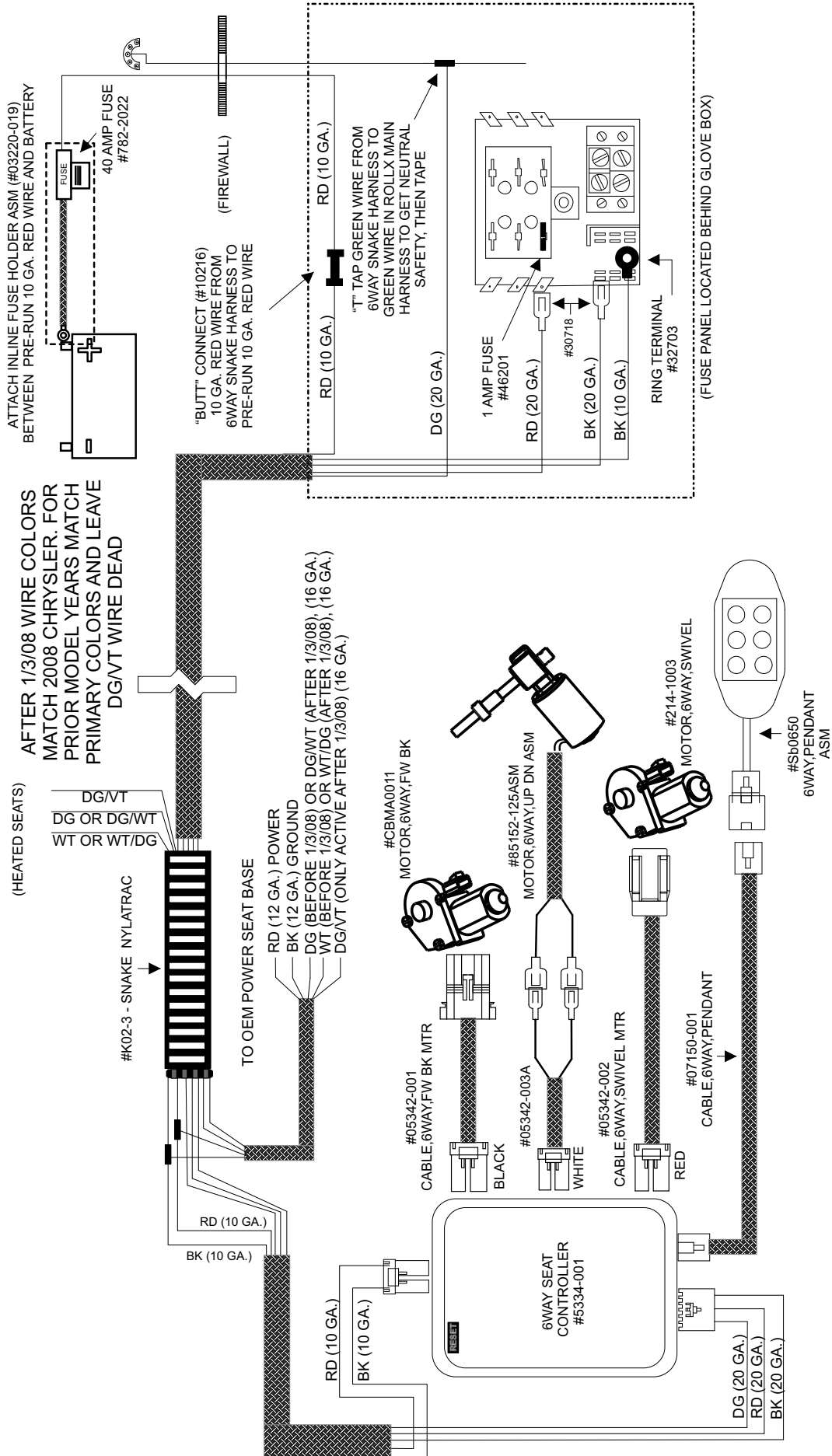


- PN 5334-002 LED controller with out resistor on park interlock
- PN 5334-0015 LED controller with one connector for 20 gage wires
- PN 5334-001 small box controller without LED's



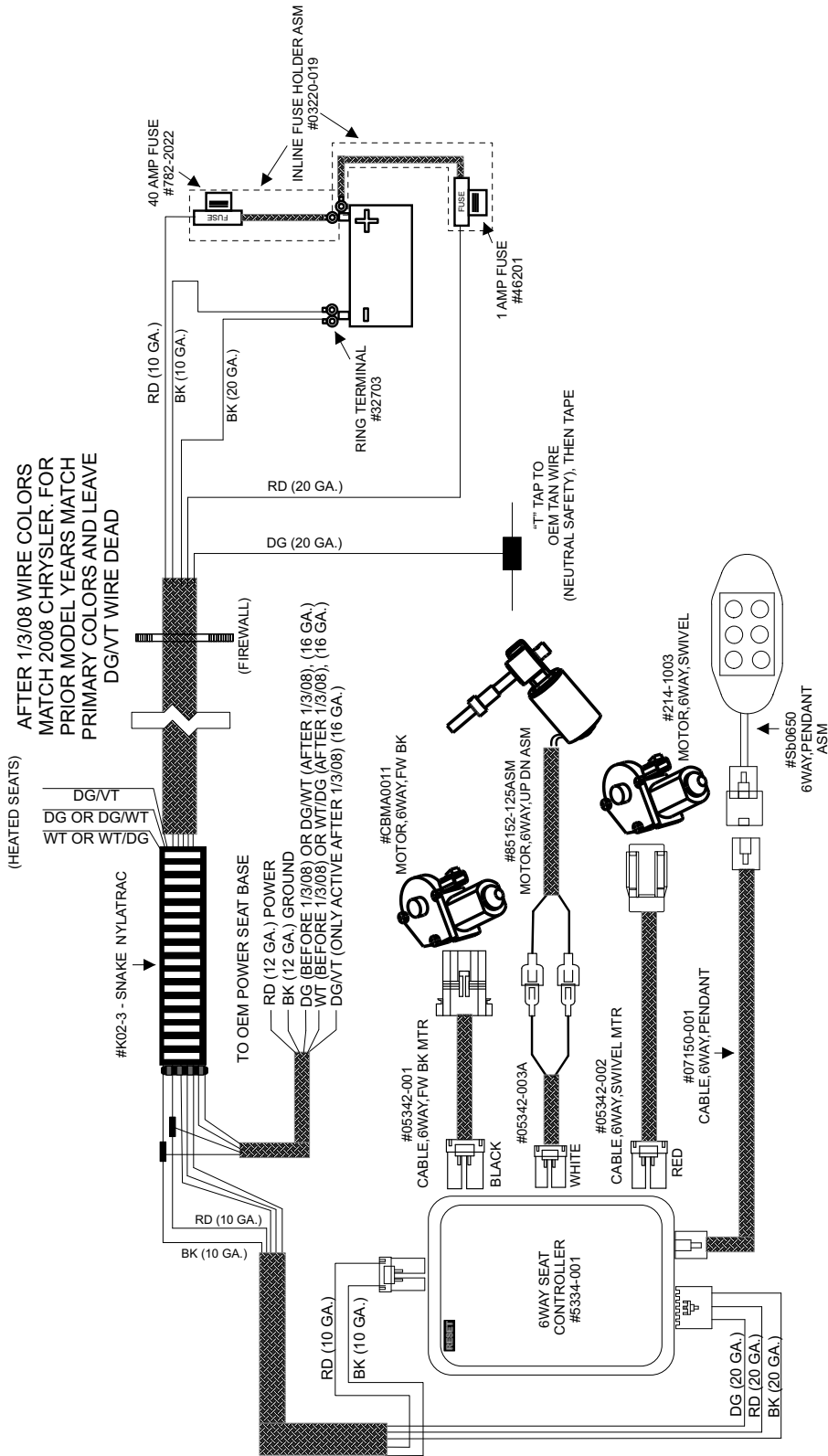


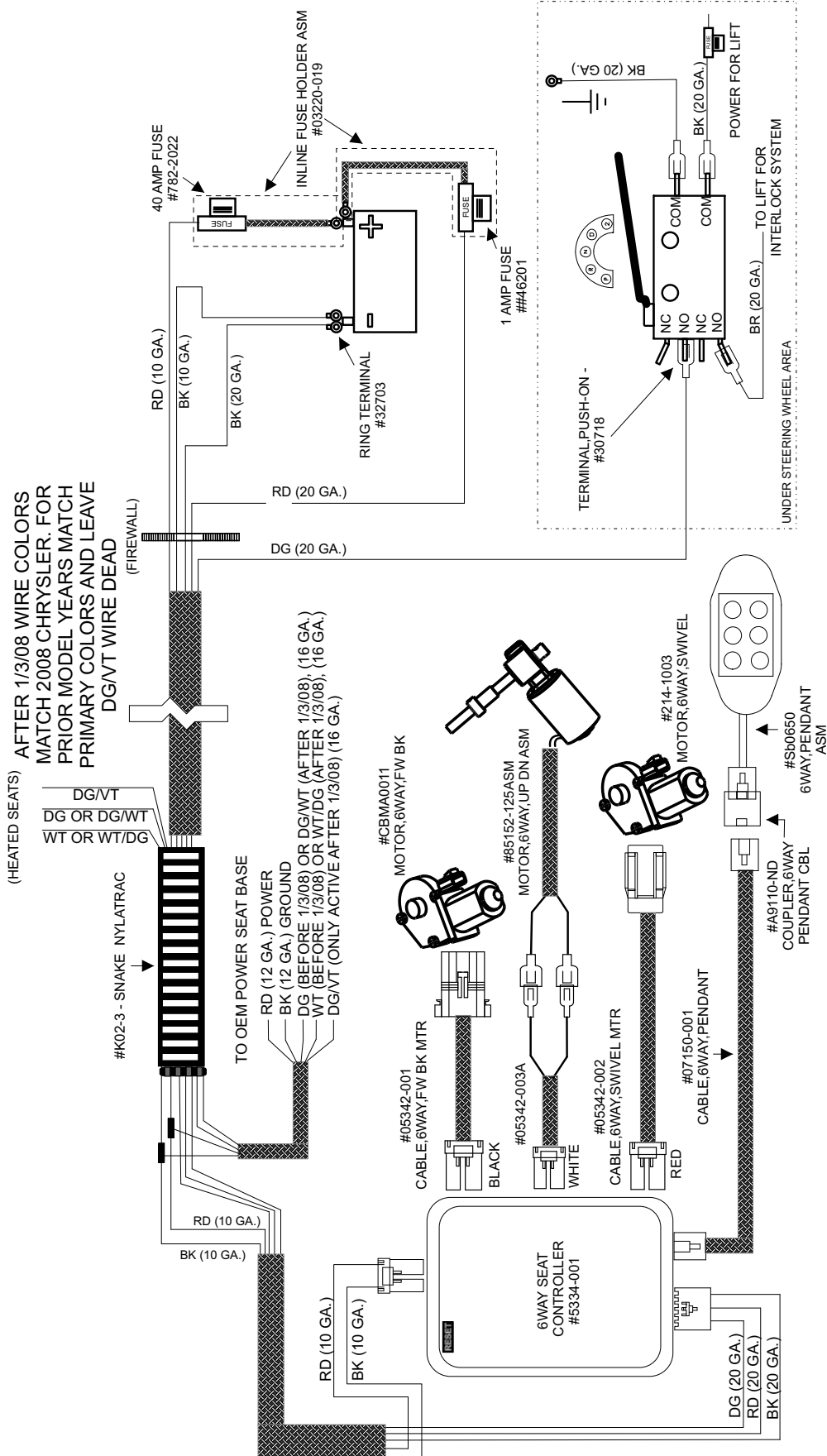
7001-04 WIRING - OEM POWER SLIDING DOOR MINIVAN

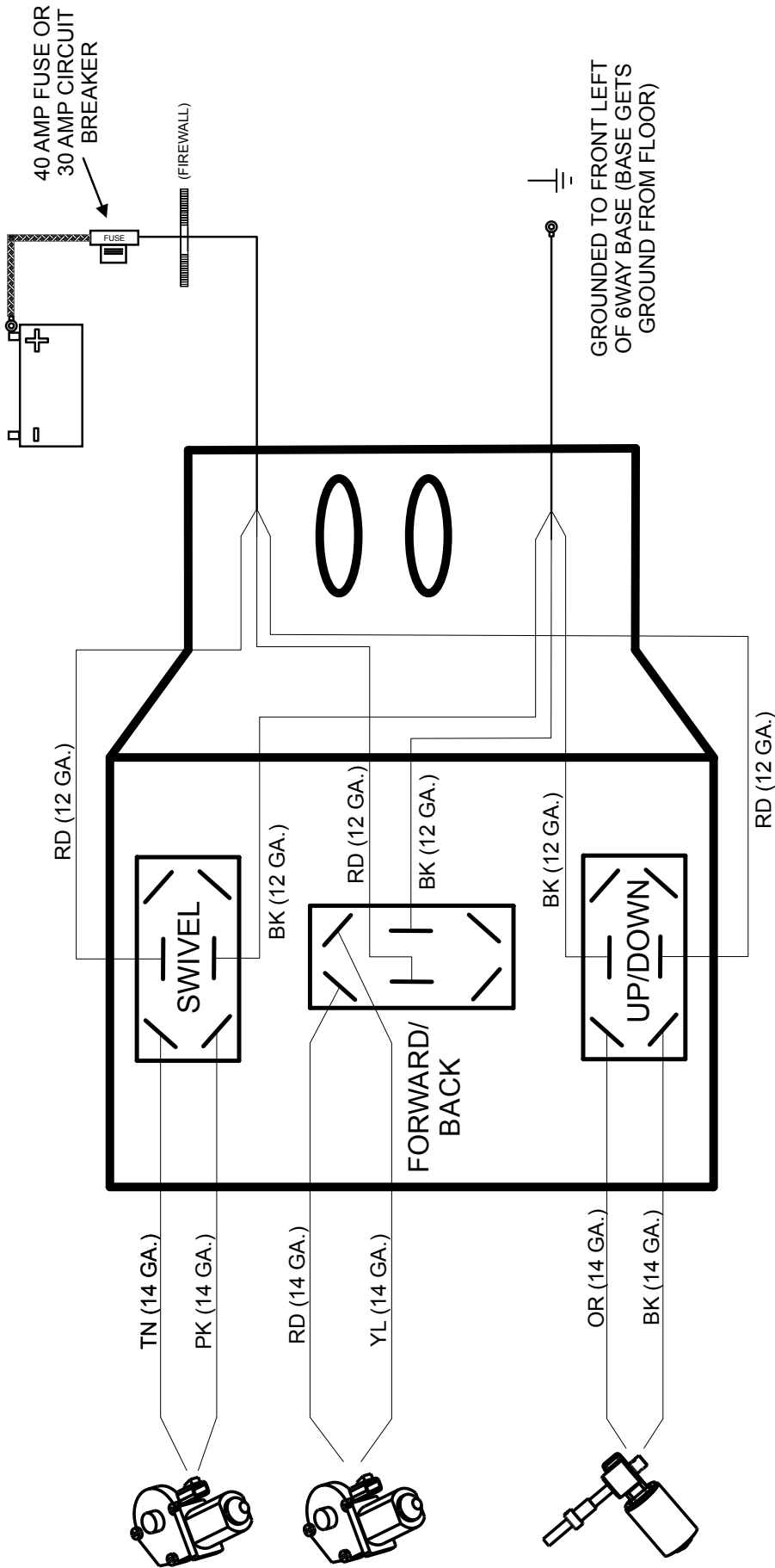




7001-04 WIRING - MOTOR BAR SLIDING DOOR MINIVAN







SWITCH PART #NGR20051BN00YMOD - SWITCH 6WAY SEAT W/ RVRSE
(3 PER BOX)

DRIVERS SIDE
(BOTTOM VIEW)



Warranty Coverage Information

Rollx Vans warrants its 6way Transfer Seat against defect in material or workmanship for a period of one year from the date the 6way Transfer Seat was installed by an authorized service technician.

For all warranty or reimbursement needs, you must have prior authorization by the Rollx Vans Service Department.

1. Call 1-800-956-6668, and a Rollx Vans Customer Service Representative will assist you in any concerns or issues you have with your van.
2. The service representative will evaluate what repair is needed, and either set up an appointment with an “At Home” service technician or direct you to a nearby service facility. An authorization number must be issued.

Rollx Vans will work with many repair facilities. Rollx Vans reserves the right to approve a repair shop or recommend an alternative.

Rollx Vans may request that defective parts be returned to our customer service department for inspection. If defective parts are found to be defective because of abuse or neglect, reimbursement for the new replacement parts may be denied. Rollx Vans reserves the right to use rebuilt components.

Rollx Vans will ship all warranted replacement parts by nationwide carrier. In most cases, shipment will be by ground transport and absorbed by Rollx Vans. Any other mode of transportation will be at the expense of the customer.

Our Mission

To improve the quality of life of people with disabilities of all income levels by delivering the best modified vehicle.

We intend to keep that customer for life by following up with a level of service that exceeds all of their expectations.

Our Values

Quality • Compassion • Honesty • Integrity • Fairness



